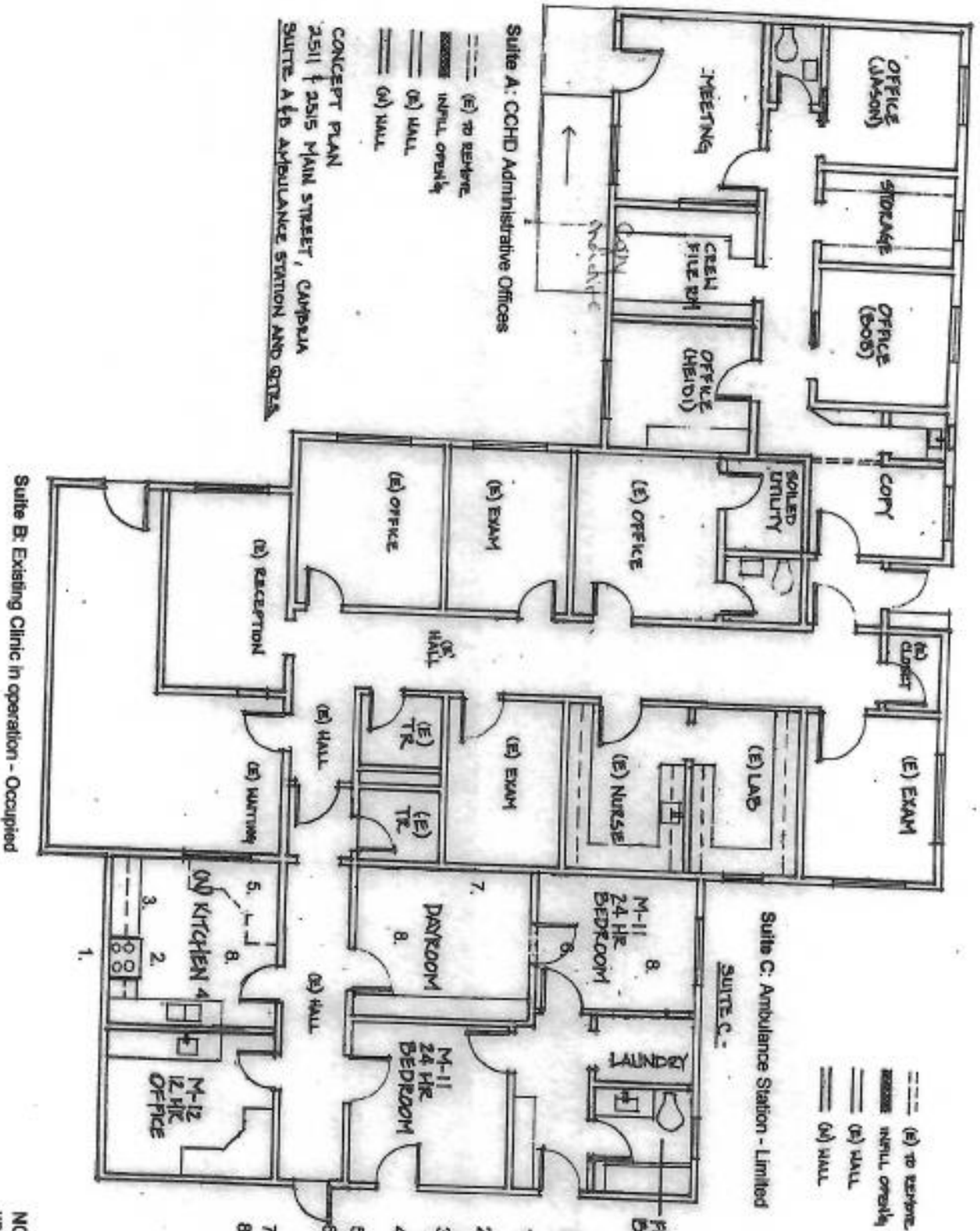


# Phase 1B - Ambulance Quarters



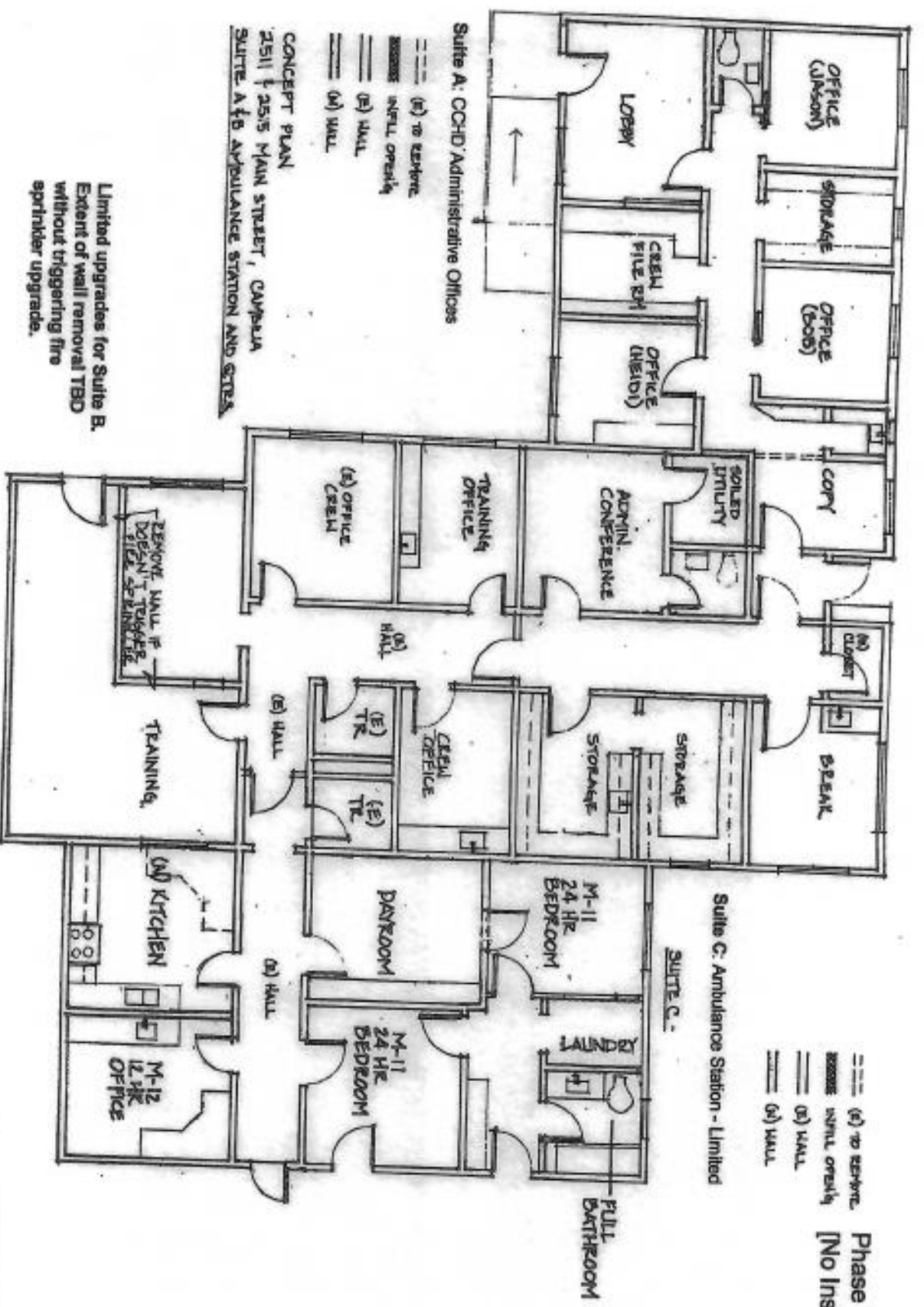
(E) TO RESTORE  
(N) FULL OVERHAUL  
(A) WALL

**NOTES:**

1. Add power receptacle for range/oven and power for range hood.
2. Purchase and install range and recirculating exhaust hood - no vent.
3. Install new base and upper cabinets adjacent range/oven.
4. Install (n) sink and countertop at (e) base cabinet.
5. Remove (e) built-in workstation.
6. Cut in and frame (n) door opening and install door and frame into (n) Dayroom.
7. Remove (e) cabinets in Dayroom.
8. Paint

**NOTE:** ADA deficiencies remain un-addressed in building. Ambulance Quarters are exempt.

**Phase 2 - Suite B Move-in  
[No Insurance Funding]**



Suite A: CCHD Administrative Offices

Suite B: CCHD Administrative Support & Ambulance Station Support

Suite C: Ambulance Station - Limited

CONCEPT PLAN  
2511 F 25th MAIN STREET, CARPENA  
SUITE A TO SUITE B APPEARANCE STATION AND STAIRS

Legend:  
 - - - (E) TO REMOVE WALL OPENING  
 = = = (B) WALL  
 = = = (A) WALL

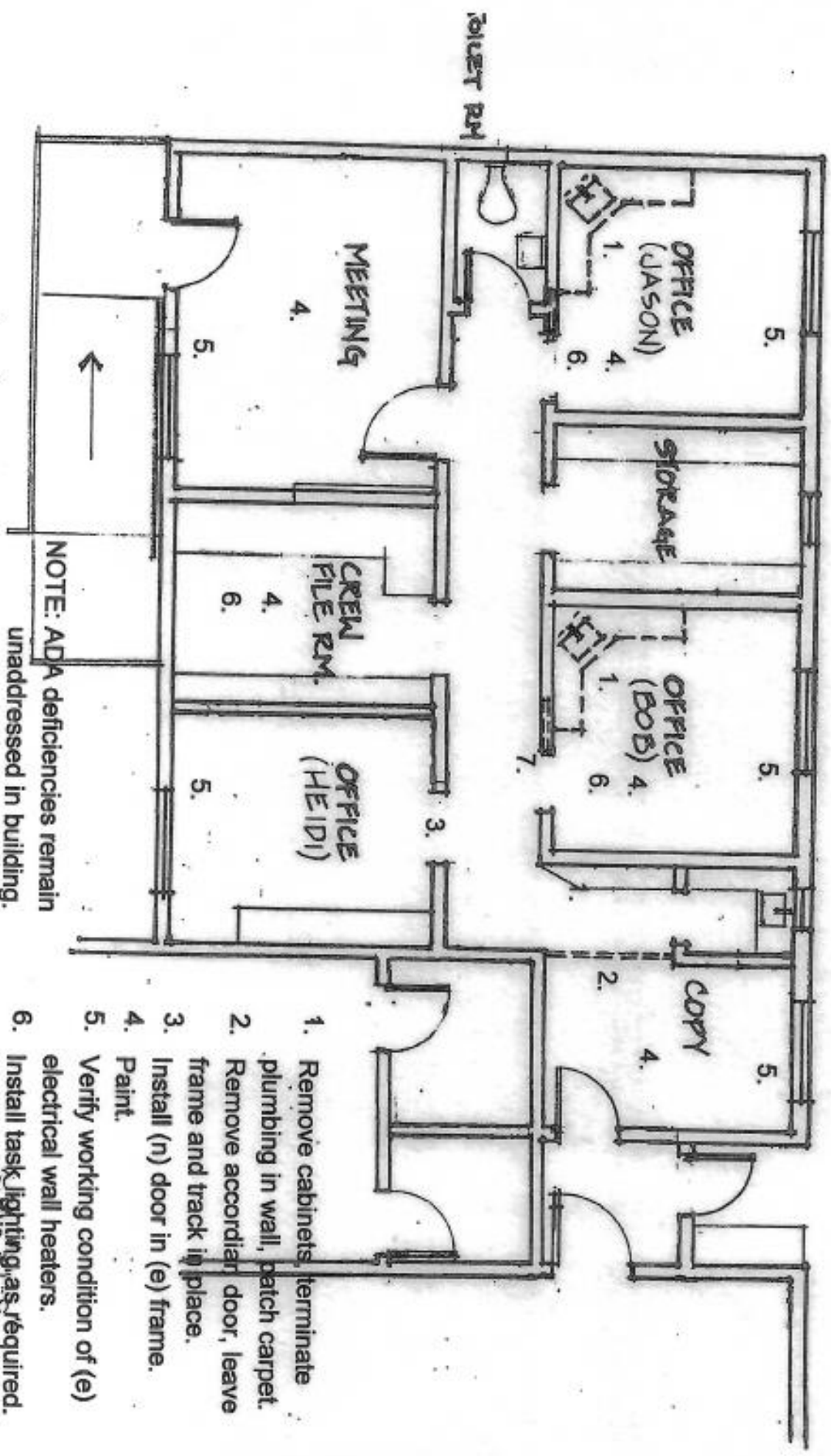
REMOVE WALL IF DOESN'T TRIGGER FIRE SPRINKLER

LIMITED UPGRADES FOR SUITE B. EXTENT OF WALL REMOVAL TBD WITHOUT TRIGGERING FIRE SPRINKLER UPGRADE.

NOTE: ADA deficiencies remain un-addressed in building throughout.

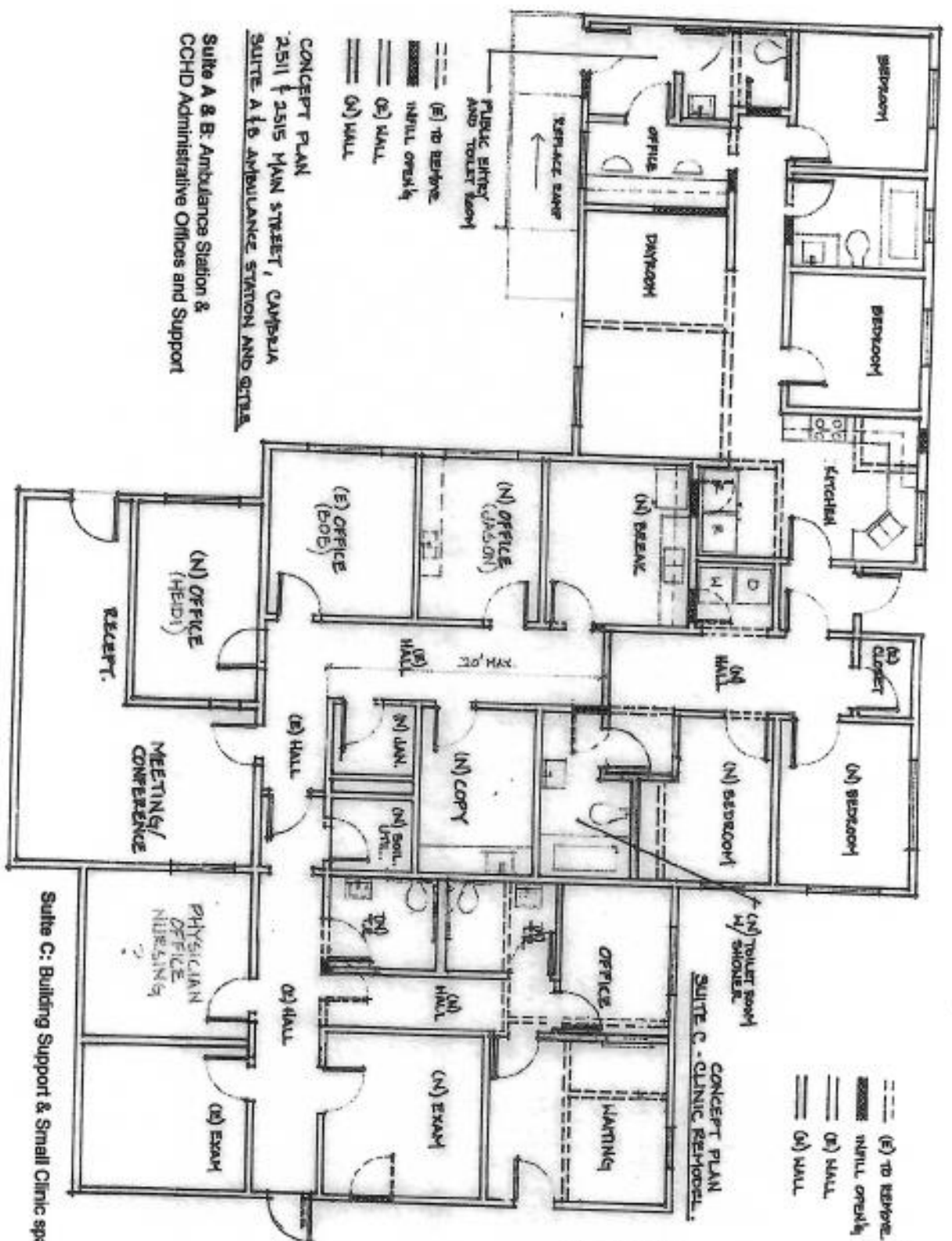
2511 MAIN STREET, CAMBRIA  
 SUITE A; CCHD OFFICES - IMMEDIATE

Phase 1A - CCHD Admin. Move-in  
 IMMEDIATE



**Building Improvement Plan  
w/ Insurance Funding**

--- (E) TO REMOVE  
 - - - - - HALL OPENING  
 = = = (N) HALL  
 = = = (N) WALL



**NOTE: Improvement Plan includes:**  
 Full scope as defined in original budgeting, including building fire sprinkling, ADA improvements, upgraded electrical services, etc.

**CONCEPT PLAN**  
 2511 + 2515 MAIN STREET, CAMPAWA  
 SUITE A1 & B AMBULANCE STATION AND QTRIA  
 Suite A & B: Ambulance Station &  
 CCHD Administrative Offices and Support

Suite C: Building Support & Small Clinic space (potentially leasable space)