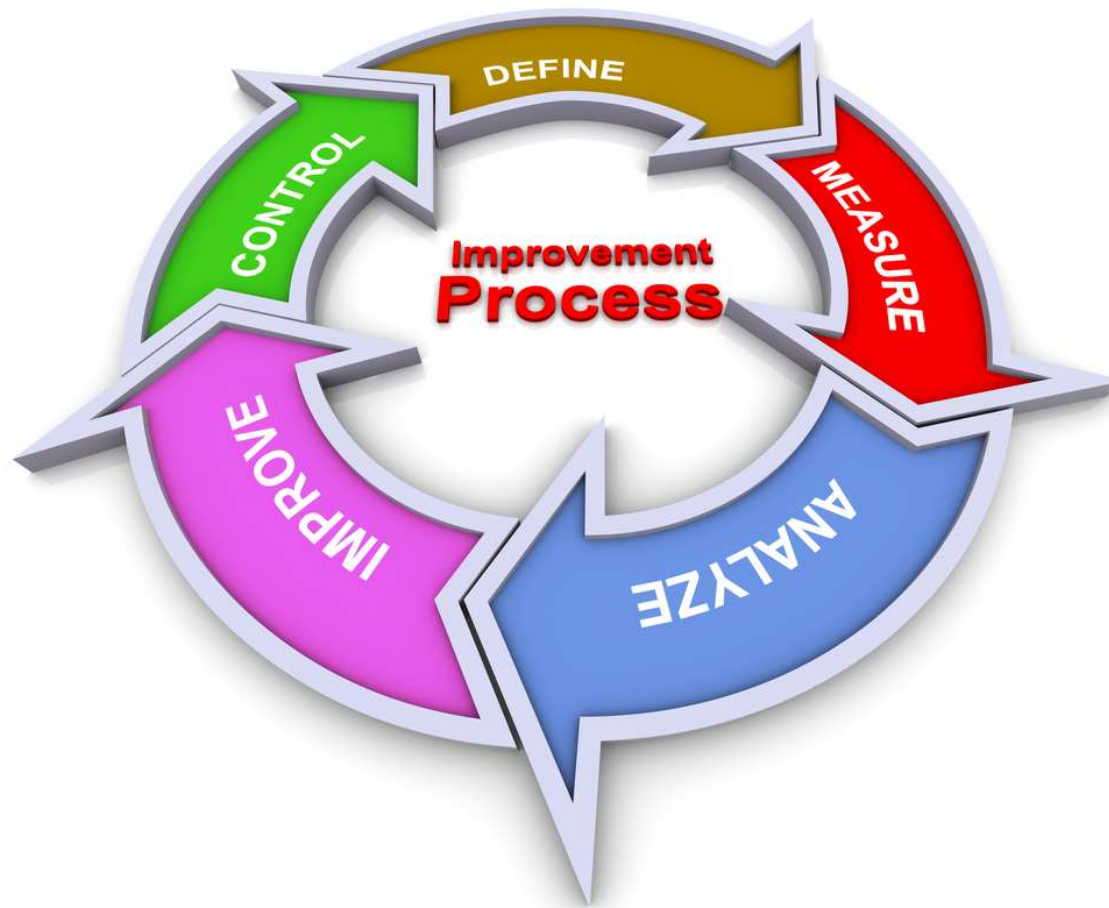


CAMBRIA HEALTH CARE DISTRICT



Quality Improvement Process

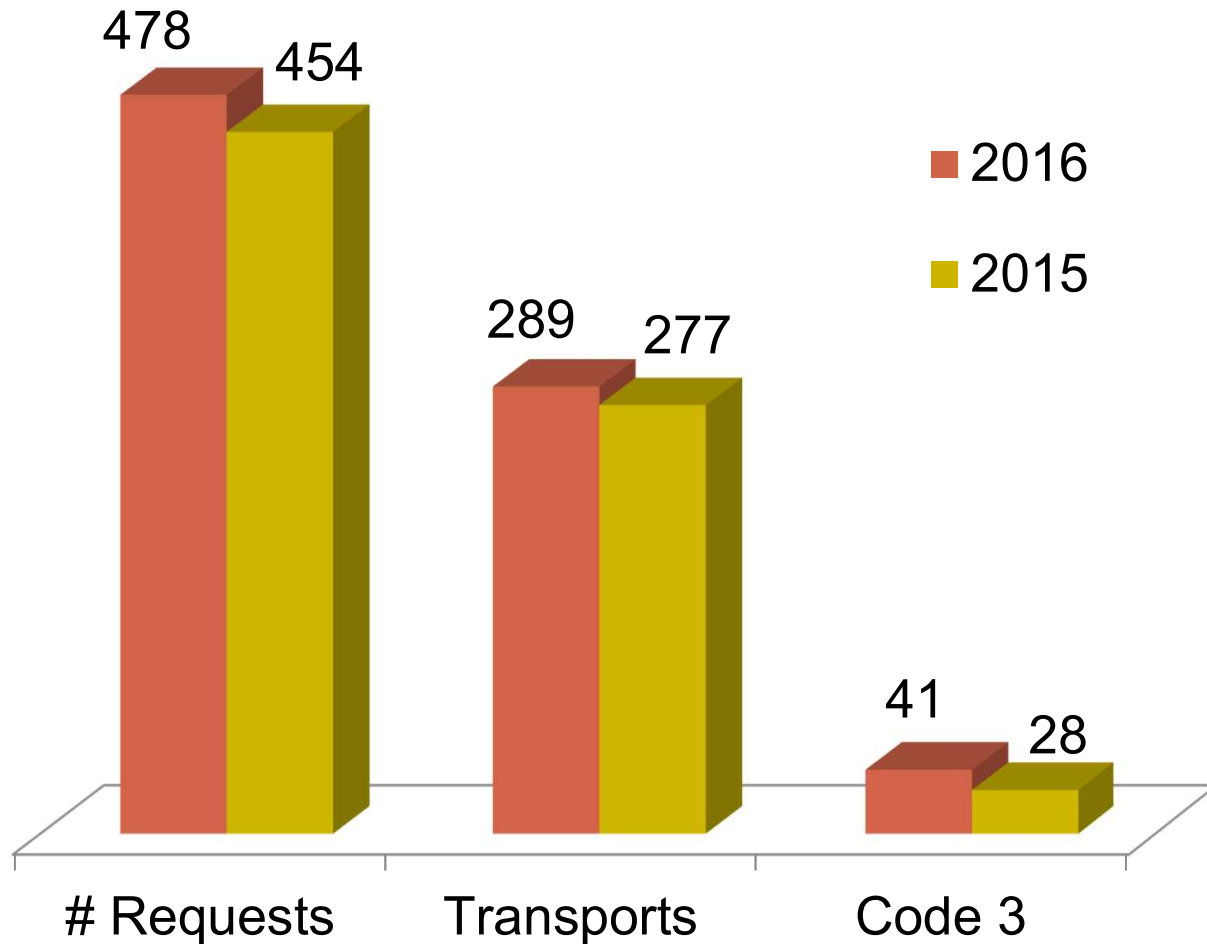


QI Program Indicators

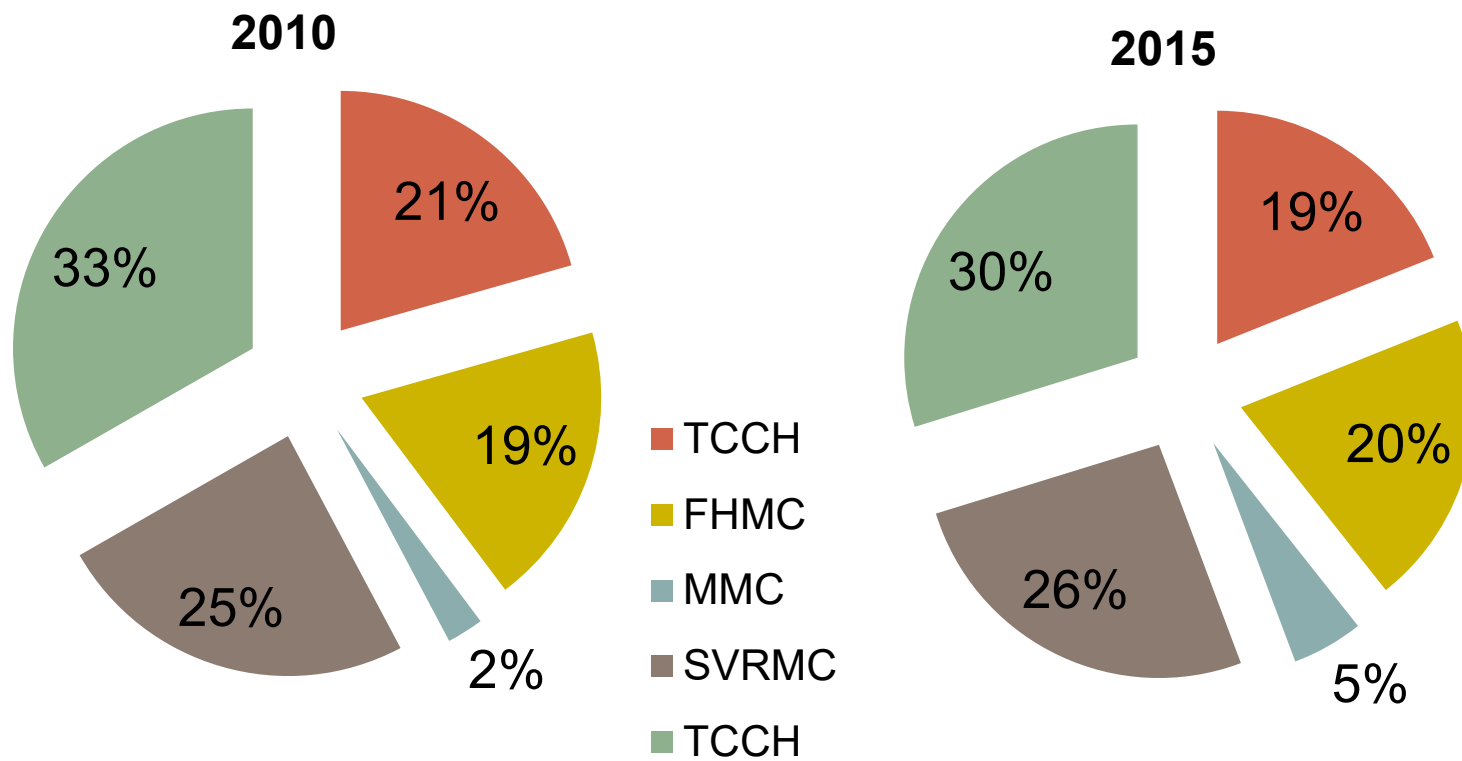
- Personnel (current certification)
- Equipment and Supplies (maintain inventory checks)
- Documentation (ePCR)
- Clinical Care and Patient Outcomes (STEMI, CPR and Trauma)
- Skills Maintenance/ Competency (HPCPR, airway)
- Transportation/ Receiving Facilities(appropriate destinations)
- Public Education (hands-only CPR programs)
- Prevention (participation in bike safety programs)

CHCD Requests & Responses

January - June 2015/2016 (6 mo. Comparison)



Historical EMS Transport Volume by Hospital



2010 - 13,355

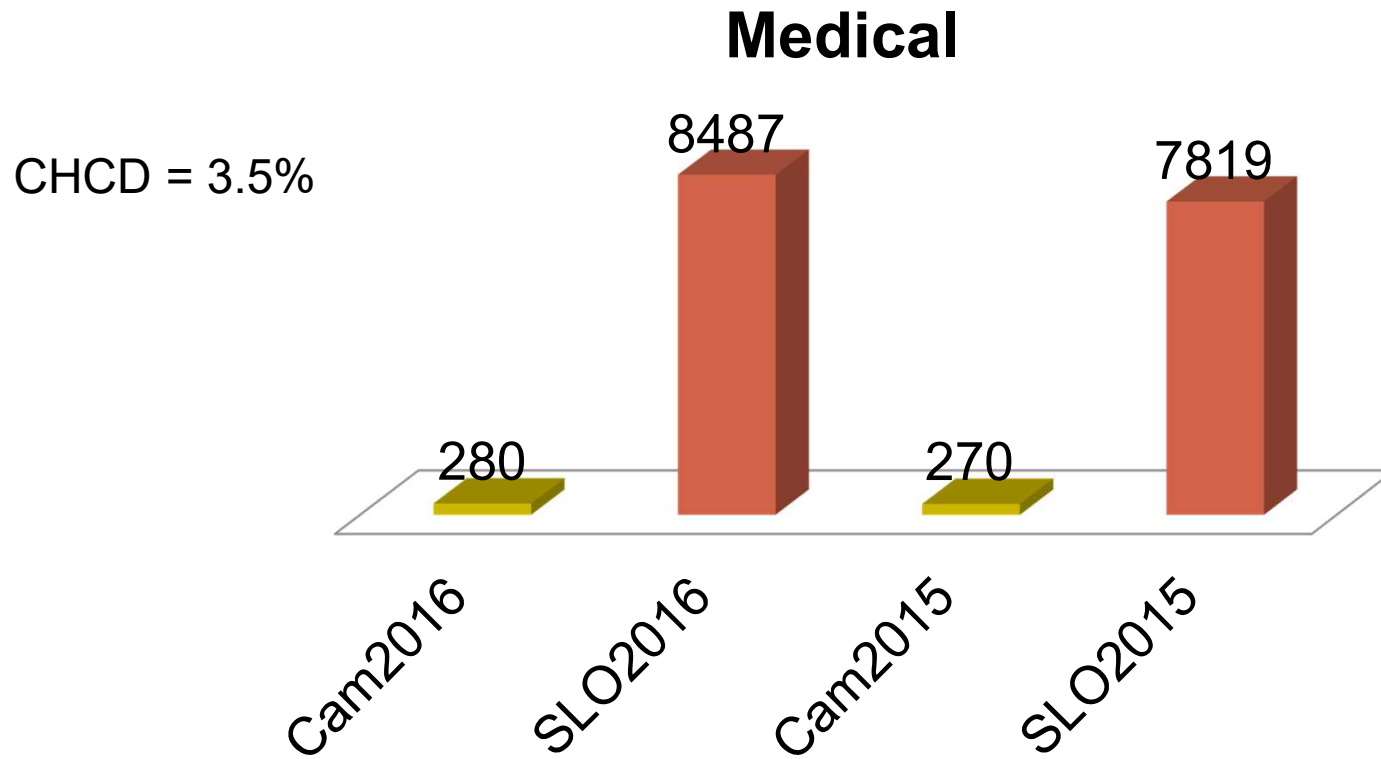
2015 - 15,273

14.36% increase

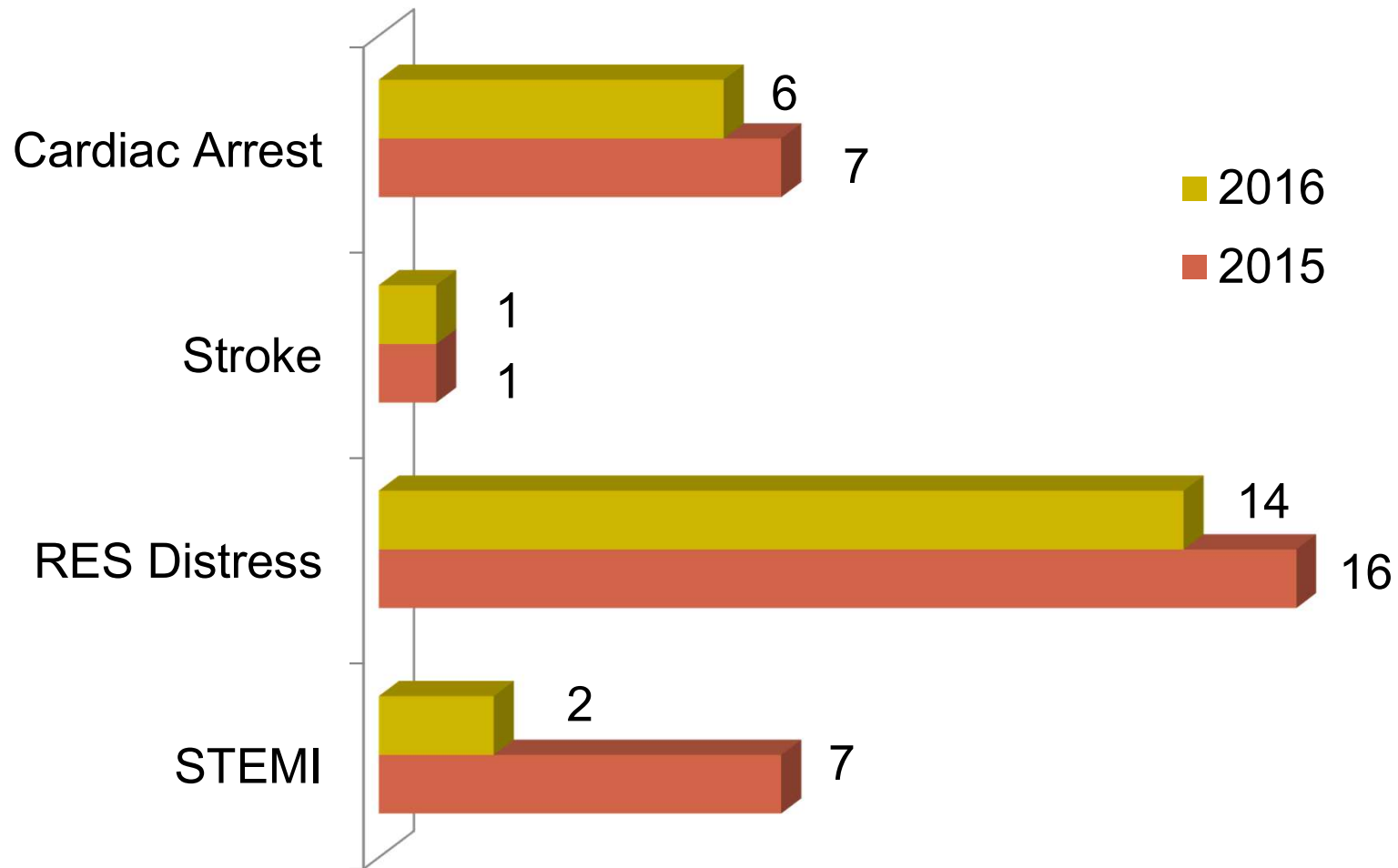
Cambria Destination

Destination Hospital	2015	2016
TCCH	40	38
SVRMC	178	157
FHMC	54	84
Other	10	5

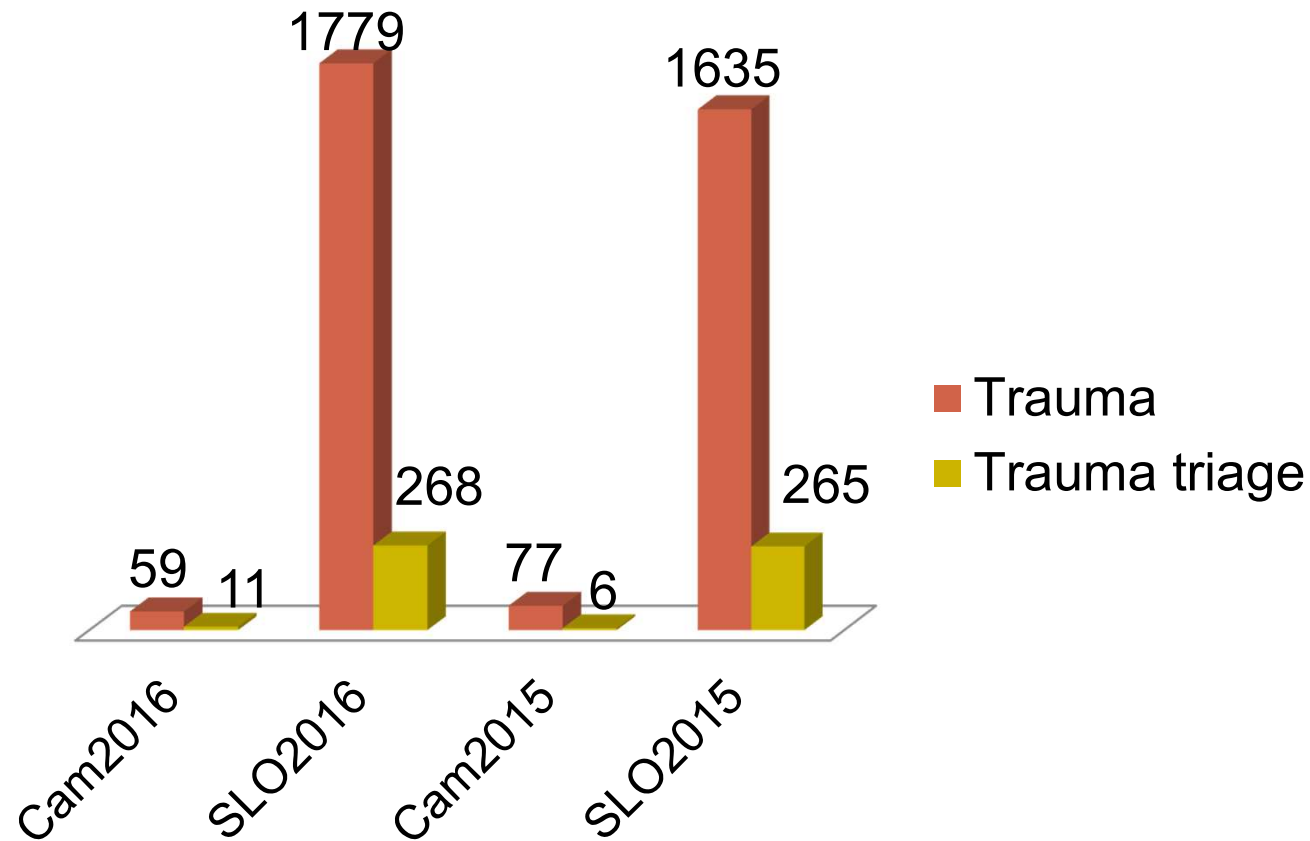
Cambria Call Types



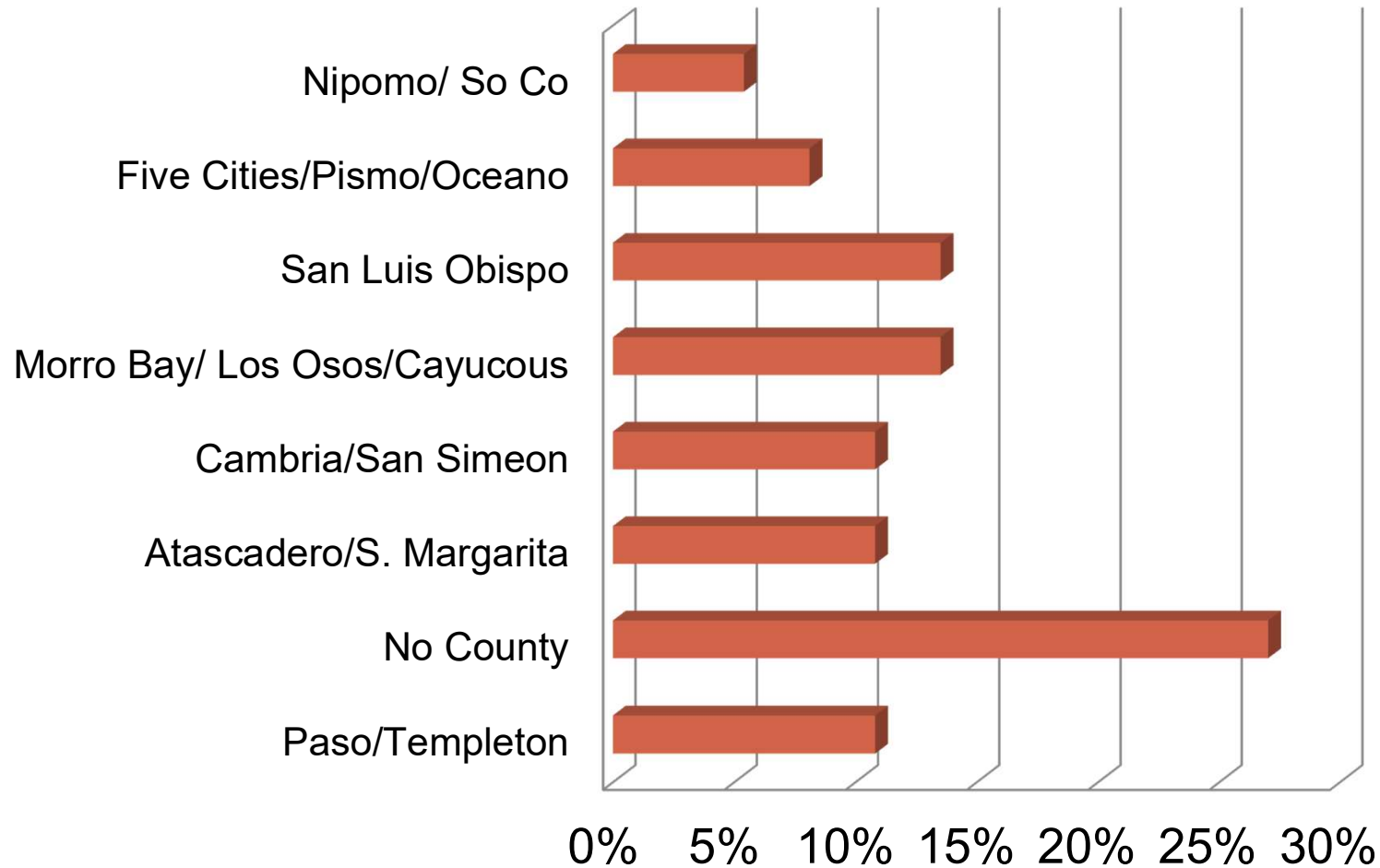
Medical by Chief Complaint



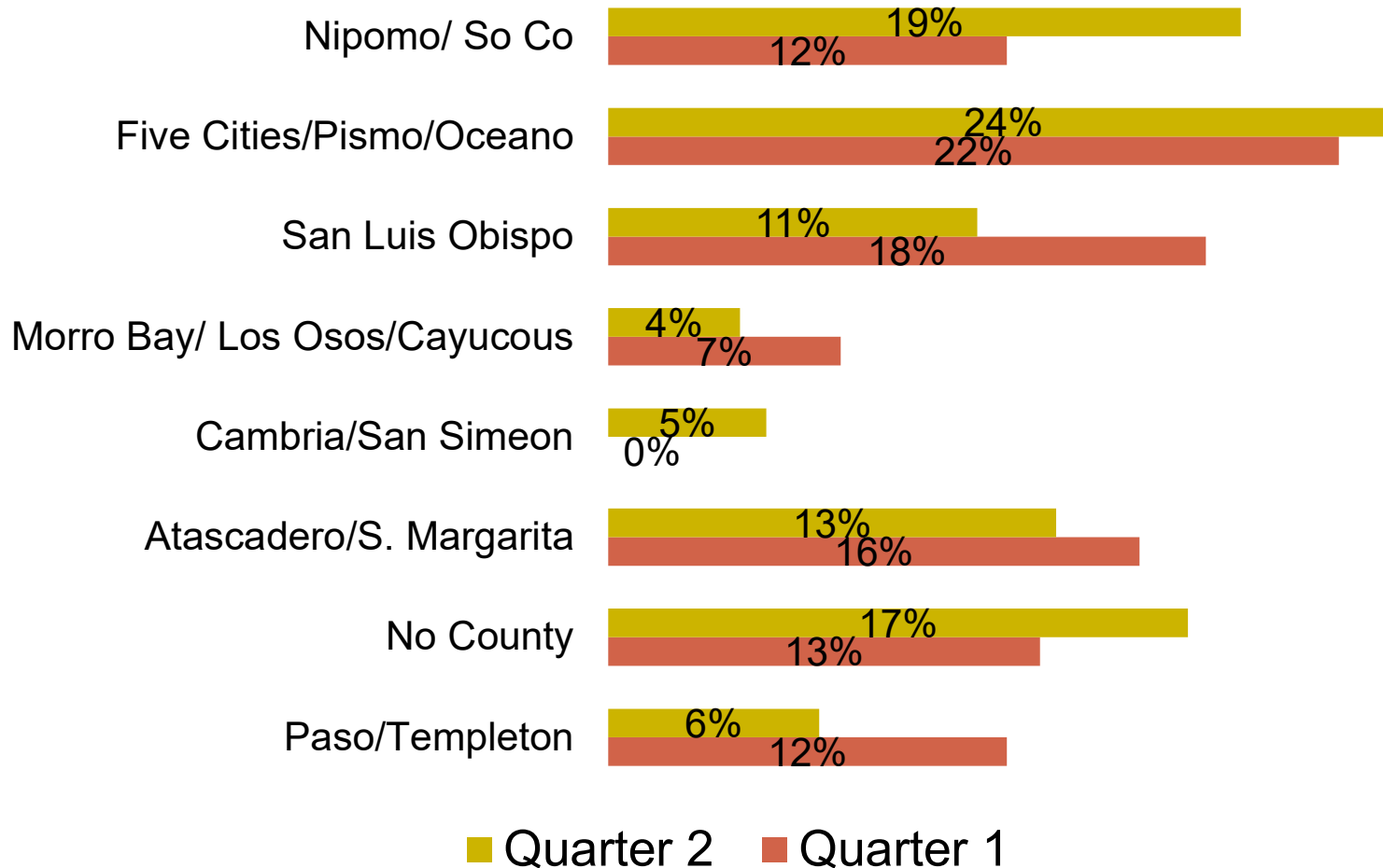
Trauma Volume



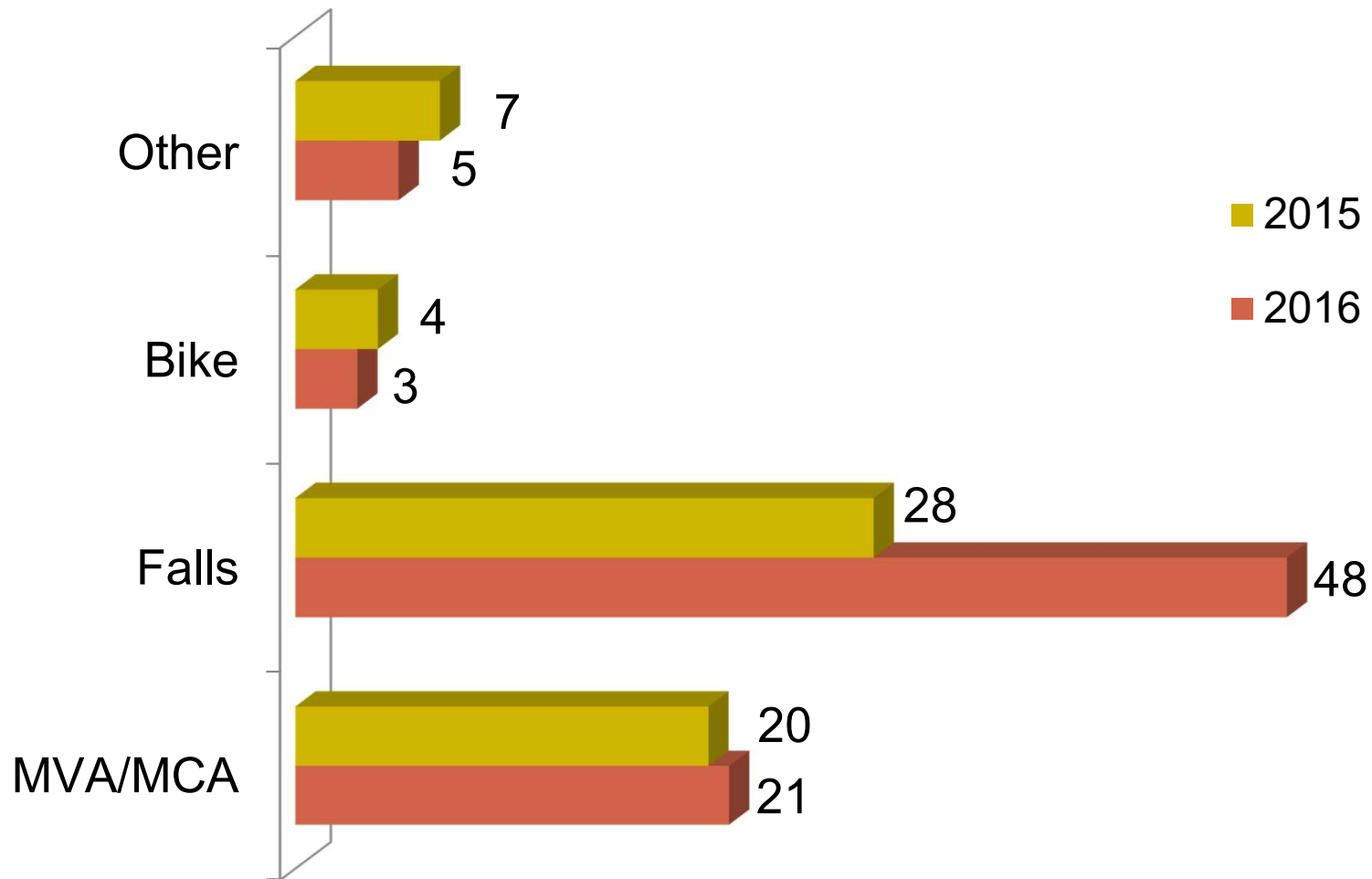
Origin of Trauma Alerts - Q1 & Q2



Origin of Consults - Q1 & Q2



Trauma by Mechanism of Injury



HPCPR Results

Arrests and Outcomes	Q1	Q2	2015
• A) Total number of EMS responses to cardiac arrests	36	44	216
• B) Total number of cardiac arrest of cardiac origin meeting study criteria	25	29	n/a
• C) Total number of cardiac arrest transported to a hospital included in study	10	15	110
• D) Total of # treated and transported that survived to ED admission	9	11	35
• E) Total of # treated and transported that survived to HOSPITAL admission	7	8	21
• F) Number survived to discharge	5	6	16
• G) % of total # treated/transported that survived to discharge (F/C)	50%	40 %	15%
• H) Number in study group that survived to discharge with normal function	5	5	17
• I) Number in study group survived to admission and place on DNR/Comfort care	2	2	n/a
• J) % of treat/transported/survived to ED admission and discharged with normal/functional neurologic status(H/D)	55%	55%	48%

Procedures

Procedure	Cambria	% success	SLO Co	% Success
CPAP	39		660	
IV	65	97%	1149	86%
ET	2	100%	36	80%
ETCO2	1/1 (*)	50%		85%
ASA Administration	17/20	85%		92%

EMS State Core Measures Median Measures for 2015:

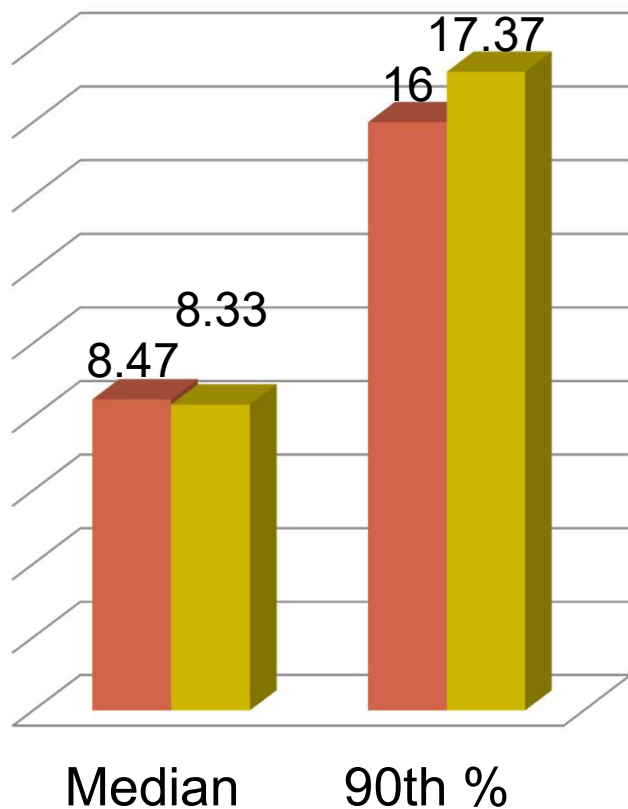
ET - 73.3%

ETCO2 – 88%

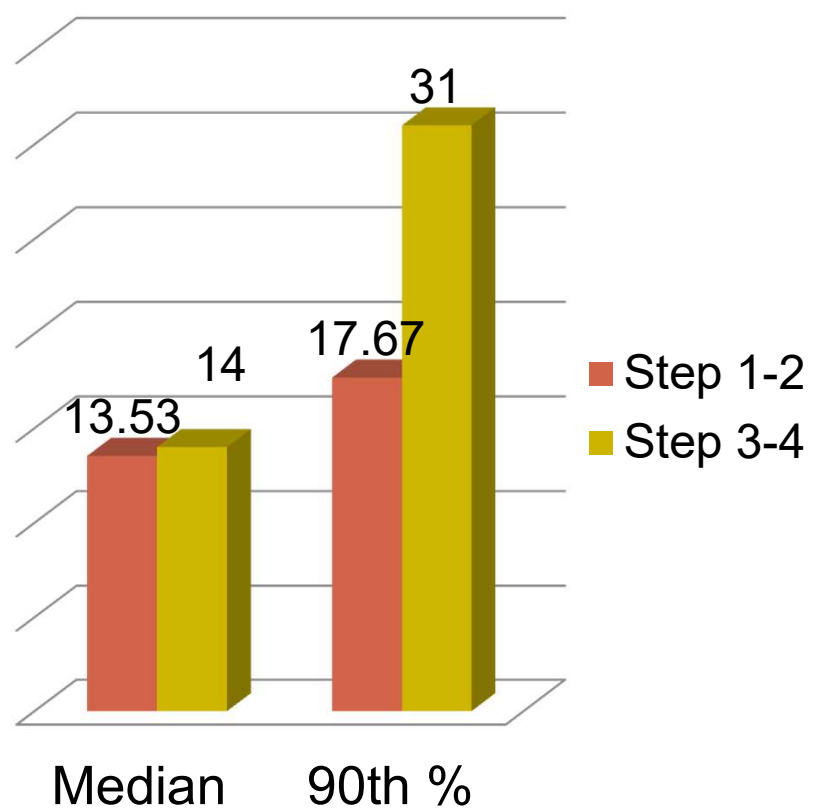
ASA administration - 66%

SLO Co. Response and On Scene Times For Trauma

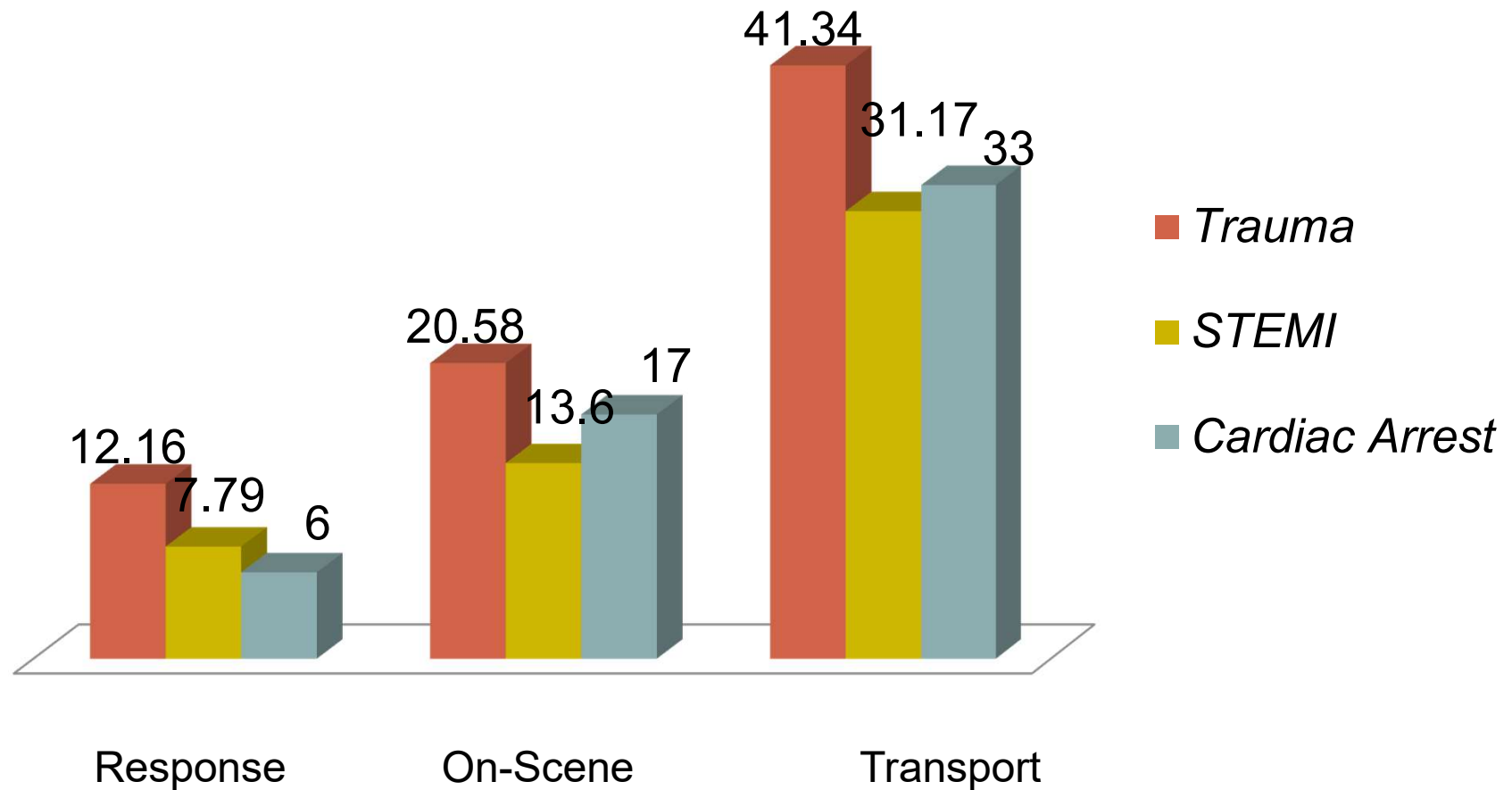
Response Time



Onscene Time



Response, Scene and Transport Times - Cambria



Questions?

